

CKD KITS

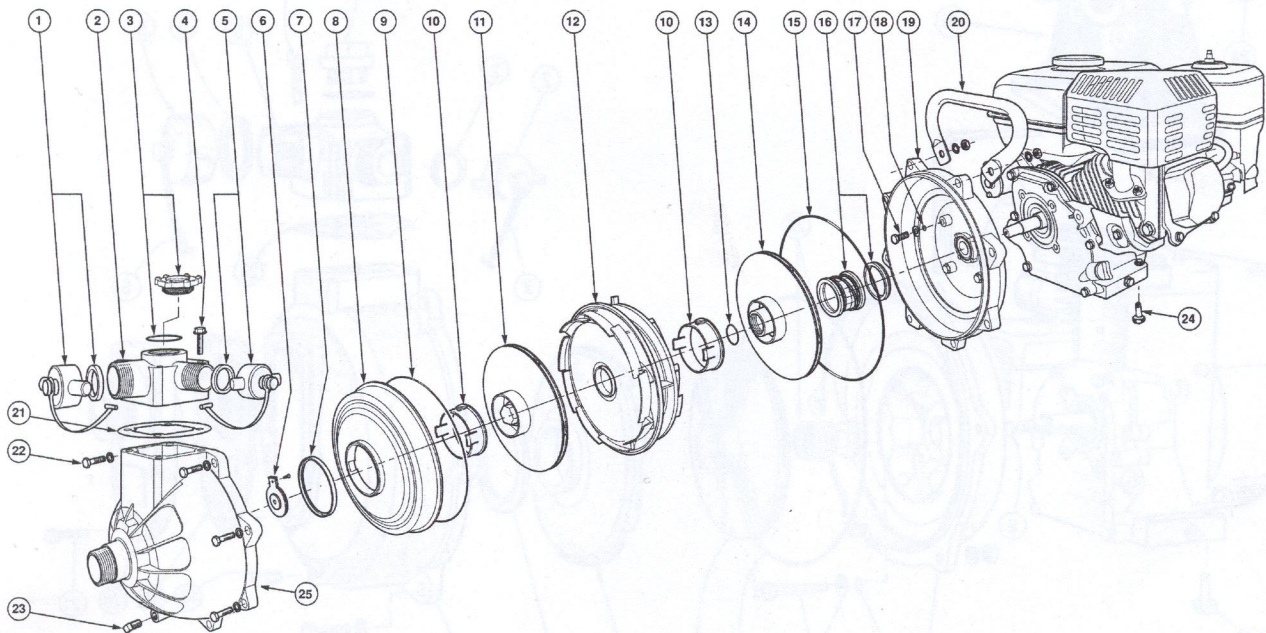
ENGINE DRIVEN SELF PRIME - TWIN IMPELLER - 1" SHAFT

TO SUIT 9HP BRIGGS & STRATTON

PETROL P/No. 93240

TO SUIT 9HP YANMAR

DIESEL P/No. 93250



- NOTES:**
- A. The spacer supplied with this yoke fits onto the back of the yoke and locates into the engine crank case.
 - B. Use suitable lubricant when fitting seal onto impeller drive. Care is required.

ITEM	NOTES	DESCRIPTION	QTY	PART NO.	UNIT
1		Blank cap assy 1.5" BSP	1	31518~	ea
2		3-Way discharge BSP	1	9475-1~	ea
2		3-Way discharge NPT	1	9475-2	ea
3		Priming plug & oring	1	11591-1~	ea
4		Screw - outlet	4	9615*4~	pkt
5		Blank cap assy 1" BSP	2	31517	ea
6		Flap valve assy	1	31326~	ea
7		Sealing ring	1	11495	ea
8		Coverplate	1	11481	ea
9		Oring - coverplate	1	49016~	ea
10		Neckring insert	1	11570-1	ea
11		Impeller B&S	1	12366	ea
11		Impeller YANMAR	1	12439	ea
12		Diffuser	1	11480-2	ea
13		Oring - impeller	1	44433	ea
14		Impeller B&S	1	12368	ea
14		Impeller YANMAR	1	12434	ea
15		Oring - casing	1	45221	ea
16	B	Mechanical seal B&S	1	31526	ea
16	B	Mechanical seal YANMAR	1	31525	ea
17		Bolt, washer, oring - yoke B&S	4	31334*4~	pkt
17		Bolt, washer, oring - yoke YANMAR	4	31544*4	pkt
18		Oring - yoke bolts	4	43064*5~	pkt
19		Yoke B&S	1	11421-4SPR	ea
19	A	Yoke YANMAR	1	11421-5SPR	ea
20		Handle B&S	1	11388SP	ea
21		Gasket outlet	1	10494~	ea
22		Bolt, nut, washer	8	31328~	ea
23		Plug 1/4" BSP	1	40436*5~	pkt
24		Engine pads	2	8998*4~	pkt
25		Casing front BSP	1	11503-2~	ea
25		Casing front NPT	1	11503-3	ea
		THE FOLLOWING ITEM IS NOT ILLUSTRATED.			
		Support Bracket B&S	1	11713SPR	ea

© Davey Products Pty Ltd 2001

~ Indicates the current Part No. listed has superseded a previous Part No.
Drawings are indicative only, product appearance may change slightly.