

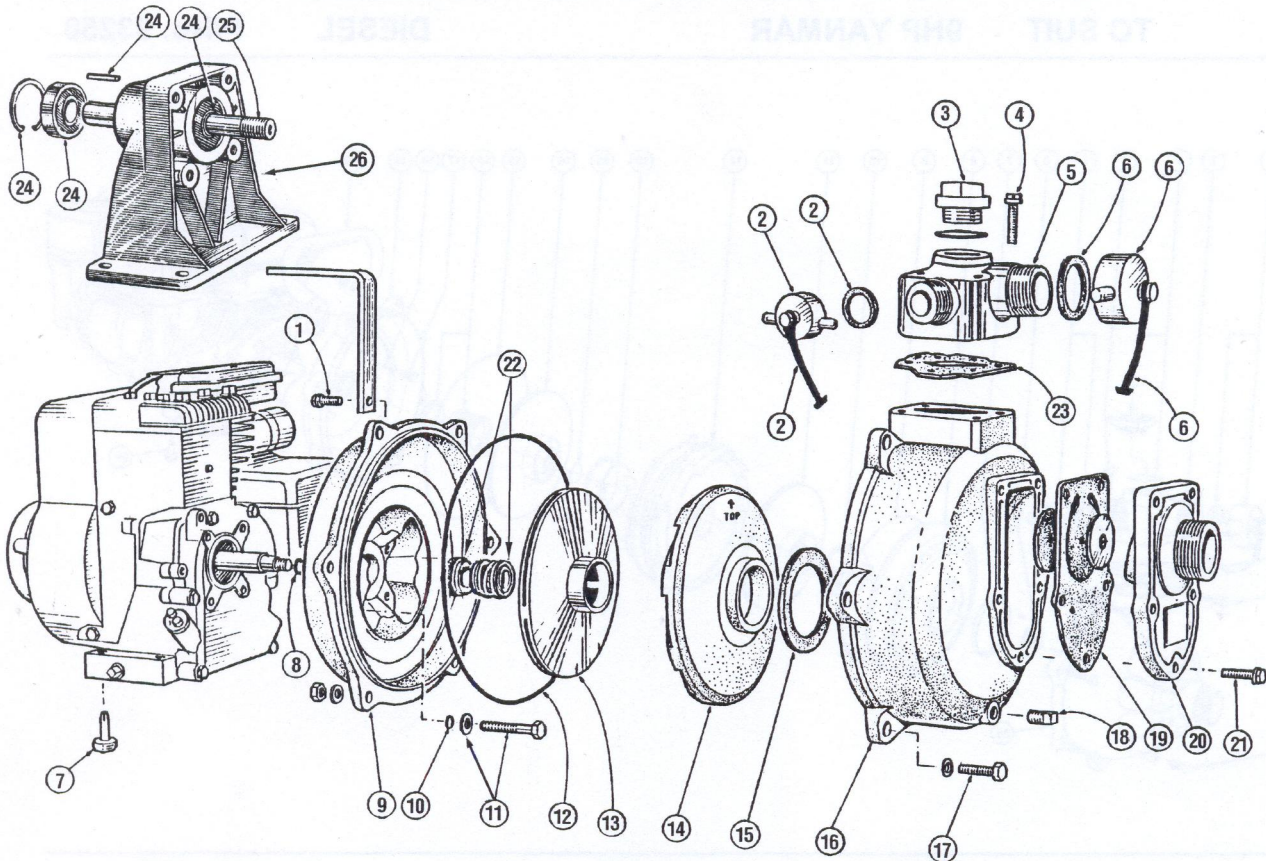
# ENGINE DRIVEN SELF PRIME

81824 81876 81885 82885 81814

81845 81834 8185D (DIESEL)

# BARE SHAFT SELF PRIME

78860



- NOTES: A. Mechanical seal  $\frac{5}{8}$ " (Part No. 48801~) also available in bulk quantities - Refer section A2  
 A. Mechanical seal  $\frac{3}{4}$ " (Part No. 48803~) also available in bulk quantities - Refer section A2  
 B. Seal kit contains items 10, 12, 15, 22 & 23.

ITEM	NOTES	DESCRIPTION	QTY	PART NO.	UNIT
1		Screw (pack of 4)	1	41145*4~	pkt
2		Blank cap assy 1" BSP	2	31517	ea
3		Priming plug & oring	1	11591-1~	ea
4		Screw (pack of 4)	4	9615*4~	pkt
5		3-way discharge	1	9475SP~	ea
6		Blank cap assy 1.5" BSP	1	31518~	ea
7		Pad (pack of 4)	2	8998*4~	pkt
8		Oring	1	43401	ea
9		Yoke $\frac{5}{8}$ " seal	1	9345SP~	ea
9		Yoke $\frac{3}{4}$ " seal Diesel	1	9790SP~	ea
10		Oring - yoke bolt (pack of 5)	4	43064*5~	pkt
11		Bolt kit - yoke to engine (pack of 4)	4	31327*4~	pkt
12		Oring - casing	1	43063	ea
13		Impeller	1	9241	ea
13		Impeller Diesel	1	9847	ea
14		Diffuser	1	9279~	ea
15		Gasket - diffuser	1	20014	ea
16		Casing	1	8992SP~	ea
17		Bolt, nut, washer	6	31328~	ea
18		Plug (pack of 5)	1	40436*5~	pkt
19		Flap valve assy	1	30720~	ea
20		Suction cover	1	9472SP~	ea
21		Screw kit (pack of 6)	5	8953*6~	pkt
22	A	Mechanical seal $\frac{5}{8}$ "	1	48801~	ea
22	A	Mechanical seal $\frac{3}{4}$ " Diesel	1	48803~	ea
23		Gasket - outlet	1	10494~	ea
	B	Seal kit $\frac{5}{8}$ " shaft	1	31331	ea
<b>THE FOLLOWING ITEMS ARE FOR BARE SHAFT MODELS ONLY</b>					
24		Bearing kit	1	31477~	kit
25		Shaft	1	9205-10~	ea
26		Bearing housing	1	9204-10SP~	ea

© Davey Products Pty Ltd 2001

~ Indicates the current Part No. listed has superseded a previous Part No.

Drawings are indicative only, product appearance may change slightly.